



# User Manual

**Breezy Smart Controller (SKU: BB01-WC)**



# Manufacturer and Contact Information

Manufacturer: Build With Robots

Address: 317 Commercial St NE, Suite 102  
Albuquerque, NM 87102

For product information, sales, service, and technical support:

<https://buildwithrobots.com/>

Customer Support Phone: (833) 273-3991

Email: [info@buildwithrobots.com](mailto:info@buildwithrobots.com)

This manual covers the model: Breezy Smart Controller (BB01-WC)

## SPECIFICATIONS:

Dimensions: 134.5 × 65 × 17.5 mm (5.3 x 2.56 x 0.69 inches)

Weight: 224.5 g (0.495 pounds)

USB: Type C

Wi-Fi: WLAN 802.11 a/b/g/n/ac 2.4GHz/5GHz

Bluetooth: Bluetooth 4.2

Splash, Water & Dust Resistant: IP68 Water / Dust Resistant



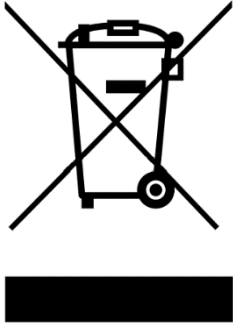
# Environmental Considerations

This section provides information about the environmental impact of the product.

## Product End-of-Life Handling

Observe the following guidelines when recycling an instrument or component:

**Equipment recycling.** Production of this device required the extraction and use of natural resources. The device may contain substances that could be harmful to the environment or human health if improperly handled at the product's end of life. To avoid the release of such substances into the environment and to reduce the use of natural resources, we encourage you to recycle this product in an appropriate system that will ensure that most of the materials are reused or recycled appropriately. It is recommended that this device be taken to a certified Waste Electronic and Electrical Equipment recycler.



Do not throw in trash at end of product life.



# Contents

<b>Manufacturer and Contact Information</b> .....	2
<b>Environmental Considerations</b> .....	3
<b>BB01-WC Breezy Smart Controller Setup</b> .....	5
<b>Controller navigation overview</b> .....	5
<b>Setting screen timeout (optional)</b> .....	7
<b>Setting lock screen PIN (optional)</b> .....	8
<b>Updating Android Kiosk PIN for settings (optional)</b> .....	9
<b>Breezy Smart Controller App</b> .....	10
<b>Log-in</b> .....	10
<b>Main Screen Overview</b> .....	12
<b>Breezy Blue</b> .....	13
<b>Menu Page Overview</b> .....	14
<b>Connecting to a device</b> .....	15
<b>Adding a Favorite</b> .....	16
<b>Device Control Page</b> .....	16
<b>Fog Time</b> .....	18
<b>Button Mode Slider</b> .....	19
<b>Schedule Button</b> .....	19
<b>Edit Device Name Button</b> .....	21
<b>Remote Controlled Operation</b> .....	21
<b>Viewing Fogging Logs</b> .....	22
<b>Device Status Icons</b> .....	23
<b>Breezy Link</b> .....	24
<b>Troubleshooting</b> .....	25
<b>LIMITED WARRANTY (USA/CANADA)</b> .....	26

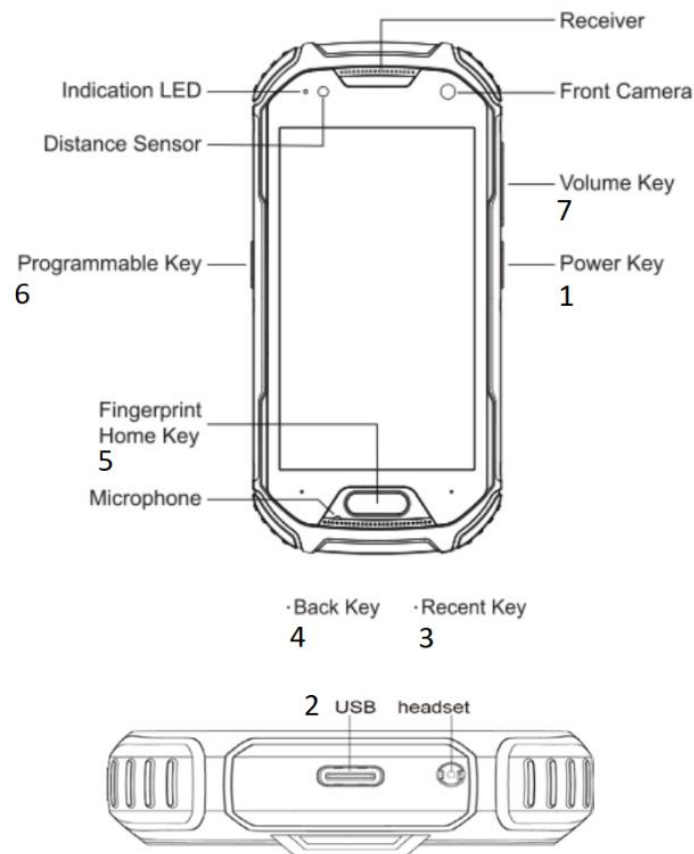


# BB01-WC Breezy Smart Controller Setup

It is recommended that you charge the controller fully before use.

## Controller navigation overview

Basic controls are the same as an Android phone.



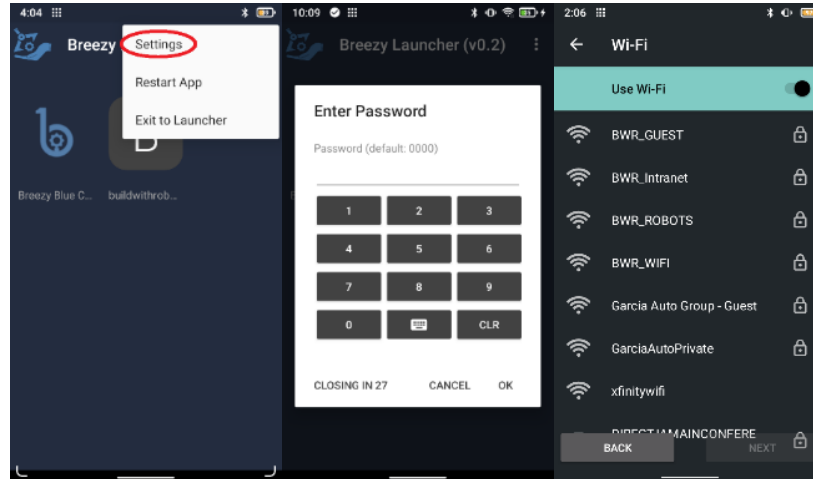
*Overview of Breezy Smart Controller device.*

1. Power Key
2. USB Connector – Plug in cable and power supply to charge device.
3. Recent Key – Touch to access the list of recently used applications.
4. Back Key – Touch to return to the previous screen.
5. Fingerprint Home Key – Touch to return to the home screen.
6. Programmable Key – Flashlight will turn ON/OFF if held for 1 second.
7. Volume Key



## Connecting to Wi-Fi - required if Controller doesn't have a SIM card installed

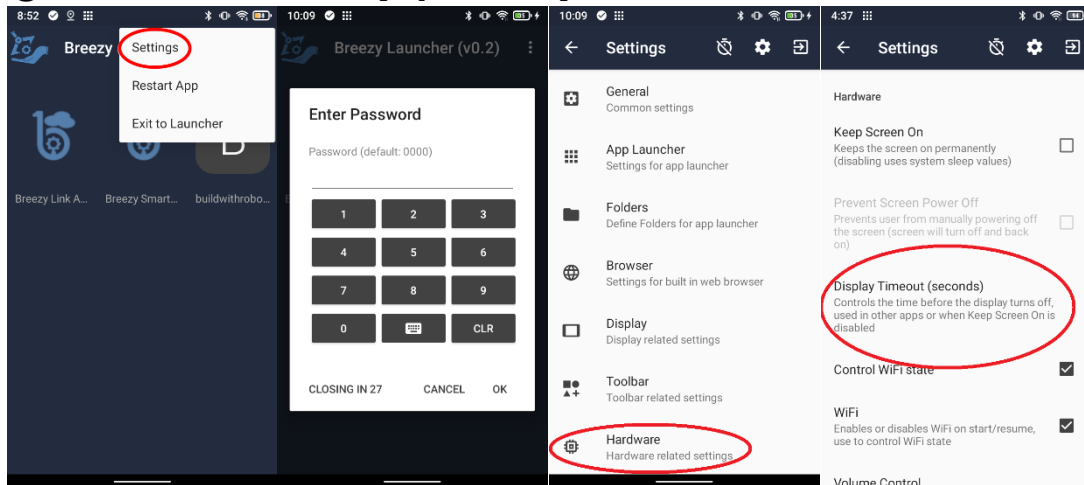
Internet connectivity is required for creating or logging into an account, scheduling fog events, and receiving app and firmware updates. App updates will occur automatically if connected to Wi-Fi or a SIM card is installed.



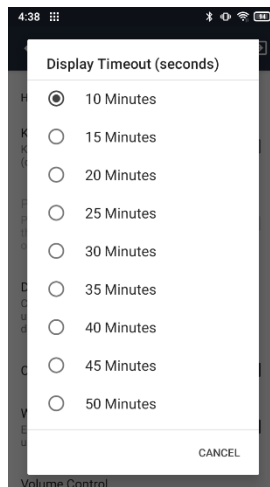
1. Power on the controller pressing and holding the power key for about 5 seconds until the controller screen turns on.
2. Select settings from the **:** icon on the main screen.
3. Enter 1234, then press OK.
4. Ensure "Use Wi-Fi" is ON and Select the desired Wi-Fi network.
5. Enter Wi-Fi password if needed and press CONNECT.



## Setting screen timeout (optional)



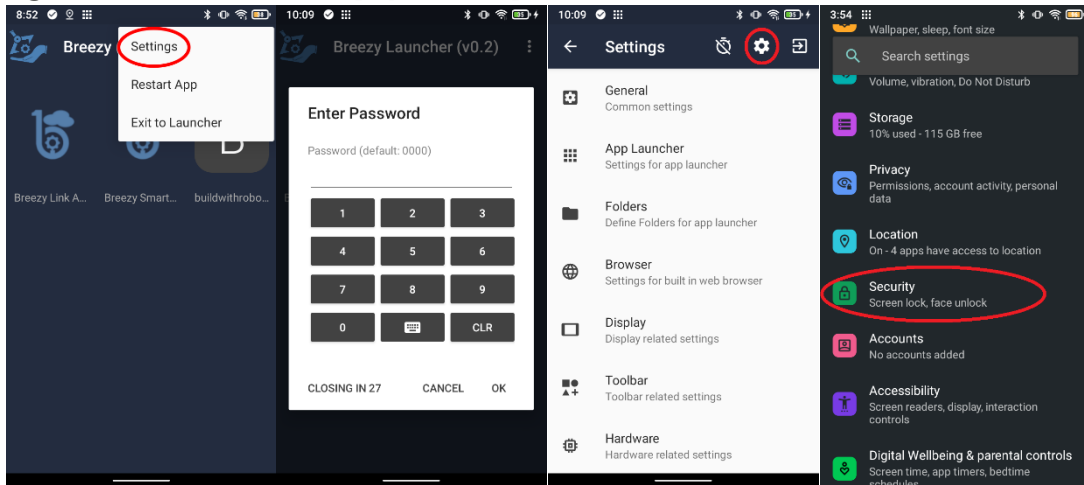
1. Select settings from the **:** icon on the main screen
2. Enter 0000, then press OK
3. Select Hardware
4. Select Display Timeout (seconds)



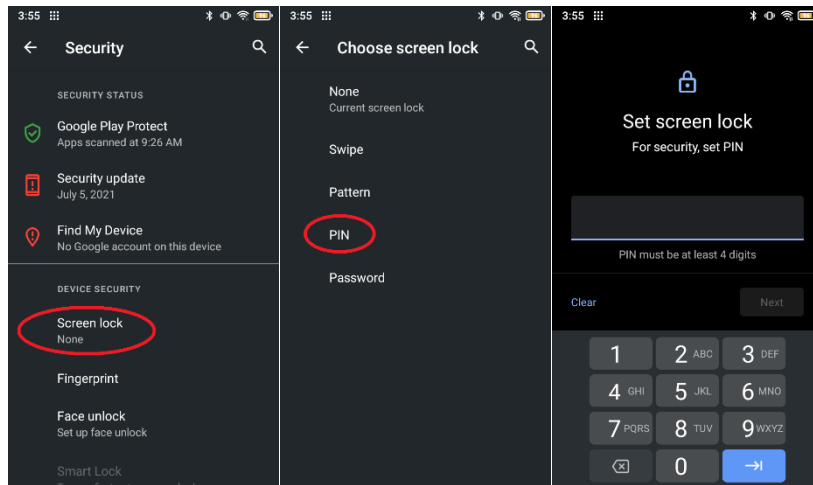
5. Select the preferred display timeout from list of options.



## Setting lock screen PIN (optional)



1. Select settings from the : icon on the main screen.
2. Enter 0000, then press OK.
3. Select the settings gear.
4. Select Security



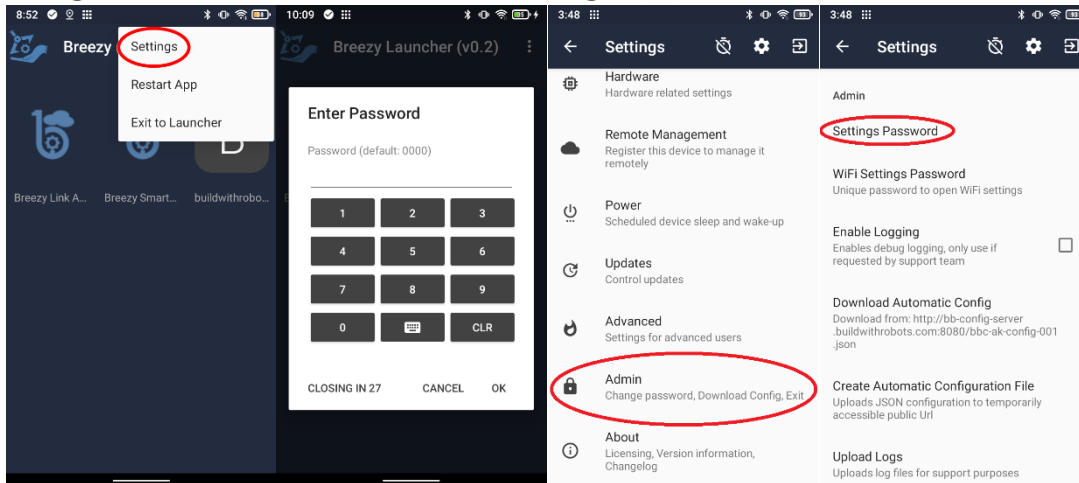
5. Select Screen lock
6. Select PIN (or other options) and follow in screen instructions

**If you choose to change the default PIN to a customized PIN, BWR will NOT be able to recover your controller in the event you lose or forget your customized PIN.**





## Updating Android Kiosk PIN for settings (optional)



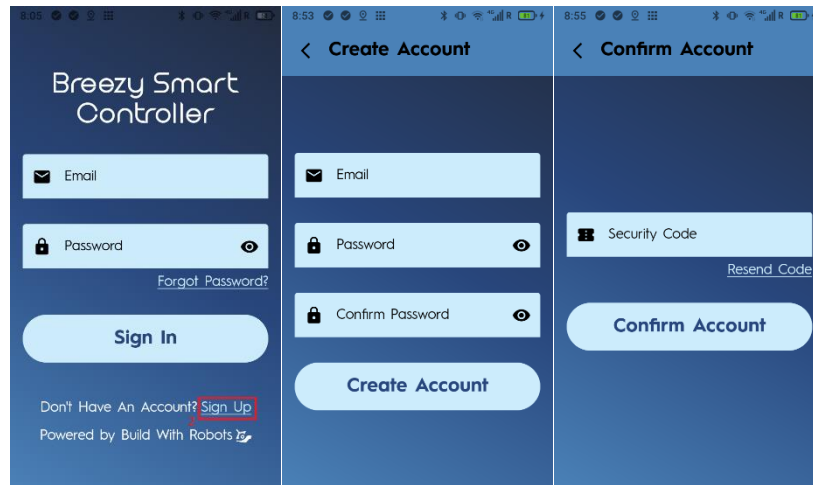
1. Select settings from the : icon on the main screen.
2. Enter 0000, then press OK.
3. Select Admin
4. Select Settings Password and follow on-screen instructions to set a new PIN, then press OK. This PIN is used to configure any system settings on the controller.

**If you choose to change the default PIN to a customized PIN, BWR will NOT be able to recover your controller in the event you lose or forget your customized PIN.**

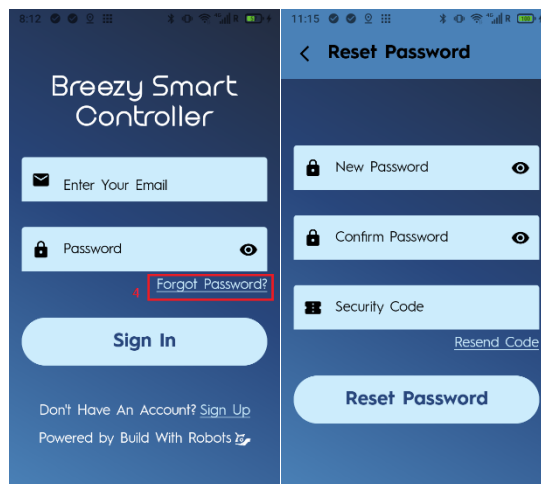


# Breezy Smart Controller App

## Log-in



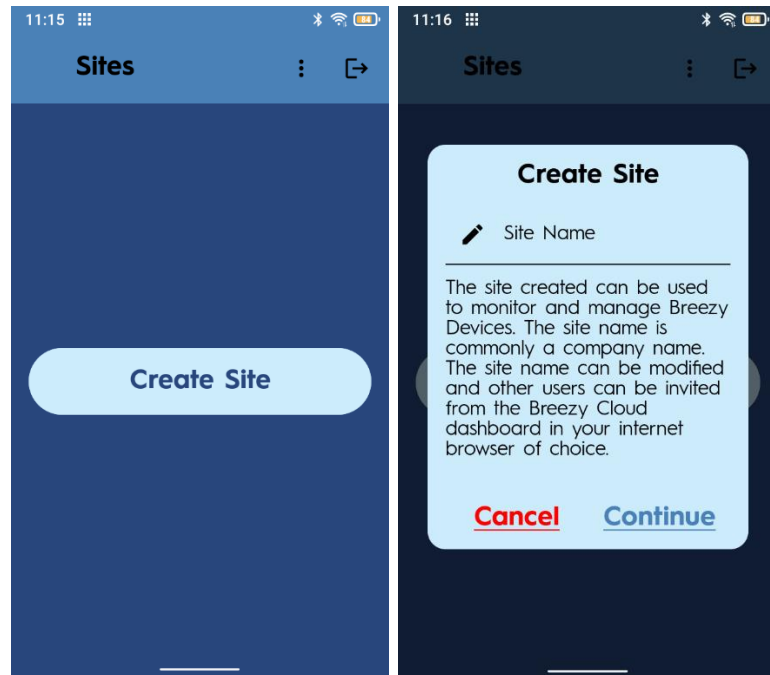
1. Press the physical home button on the controller.
2. If the Breezy Smart Controller app doesn't auto launch, press the icon on the screen.
3. Sign up for a new Build With Robots account, or Sign In to an existing account. If *Sign Up* is selected, an email and a password will be required. One-time email verification will be required for the first sign in.



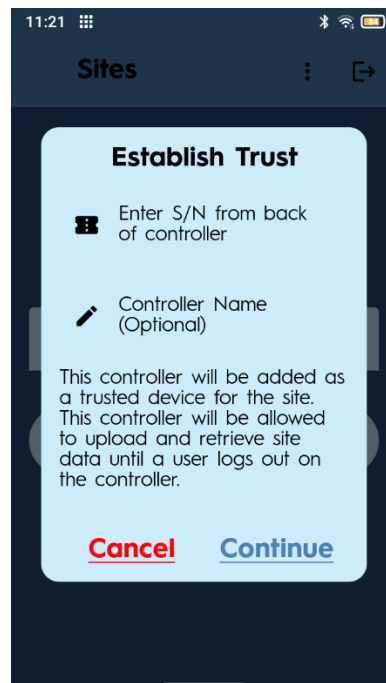
4. Once a new account is created, new users will be prompted to create a site for all local Breezy devices. The site is commonly



named after the company or building where the equipment will be located.



5. Once the site is created and selected from the available drop-down menu, the user must add the controller to the site. Enter the serial number from the rear of the controller (including all zeros) and optionally create a name for the controller then press continue.



6. To reset the account password, select *Forgot Password* from the initial sign in screen. A verification code delivered to the account email will be required to set the new password for the account.

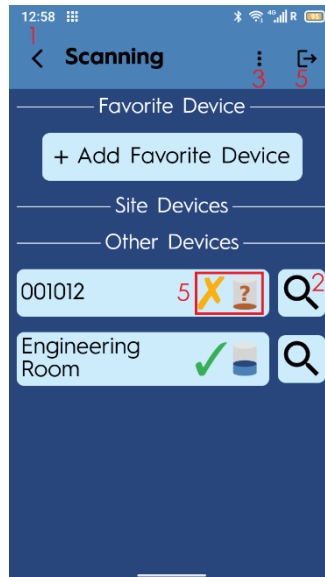
## Main Screen Overview



1. Menu button – Displays user account details, app version, and number of days before user is signed when no internet is available.
2. Sign out button
3. Product type - Press the Breezy Blue or Breezy Link button to select the type of device to configure or control.



# Breezy Blue

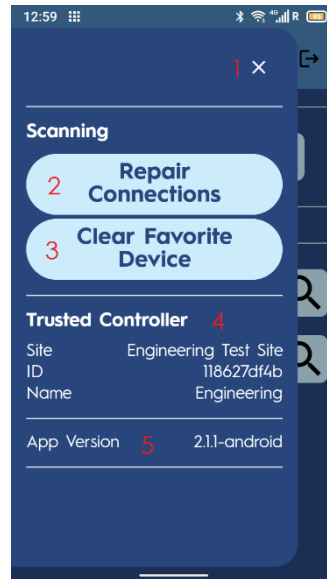


Devices are shown under Site Devices or Other Devices. When a device has been connected to, it is moved to Site Devices. One device can also be added as a Favorite Device by pressing the + *Add Favorite Device* button. The favorite device will always be shown at the top of the screen. Devices can be removed from the Site devices list on the Breezy Cloud dashboard located at [Cloud.buildwithrobots.com](https://Cloud.buildwithrobots.com)

1. Controller clock – The time will automatically update to your local time when the controller is connected to Wi-Fi or cellular. Ensure this time is correct before scheduling Breezy Blue fogging events.
2. Identify – Used to identify the device. Pressing this button will flash the Breezy Blue ring light Blue/Yellow for 5 seconds to Identify the device.
3. Menu button – Site and app information is available here. Bluetooth Connections can be refreshed by pressing the *Repair Connections* button.
4. Breezy Blue status – The current status of the device status and tank level.
5. Sign out button – This button signs out of the current site.



## Menu Page Overview

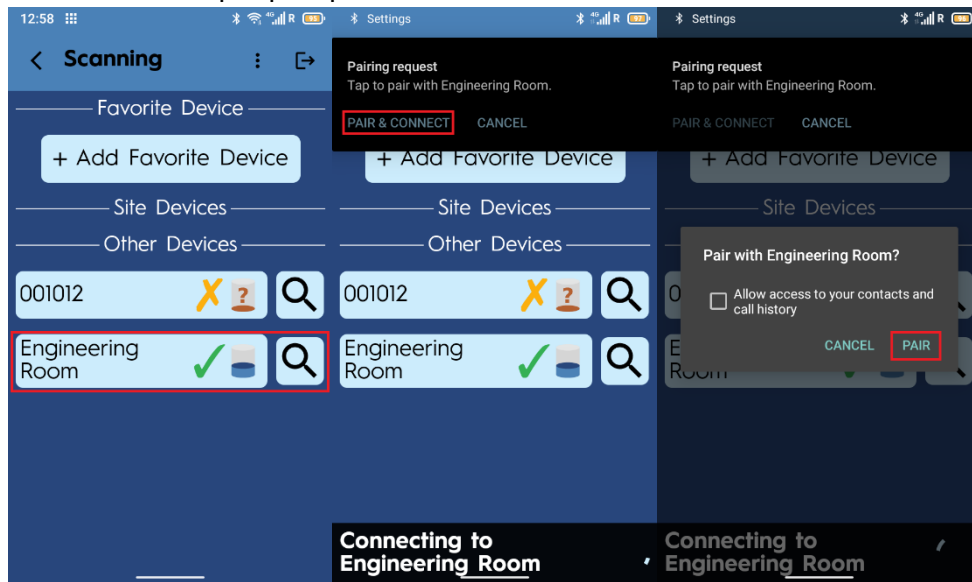


1. Close Page button – Button to close the menu page and return to the scanning screen.
2. Repair Connections button – Button stops, then restarts Bluetooth scan. This is useful if the device list is not updating properly.
3. Clear Favorite Device button – Button clears all devices from the Favorite Device on the scanning screen.
4. Site information – The site the controller is currently associated with.
5. App Version – The version of the currently installed app.

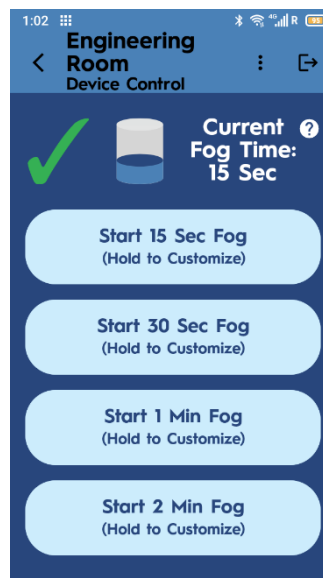


## Connecting to a device

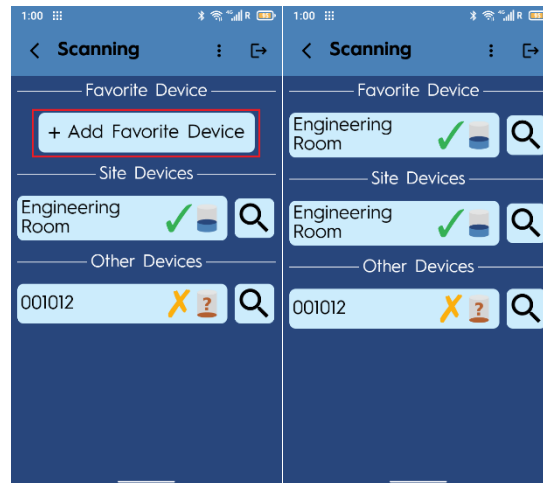
1. All the available devices are shown as a list on the scanning screen.
2. Select a device to connect to. For example, "Engineering Room". If the device hasn't been connected to previously, follow steps 3 and 4 below.
3. Press the PAIR & CONNECT button from the notification bar.
4. Press PAIR in the pop-up window.



5. Once paired, the device control page will load.

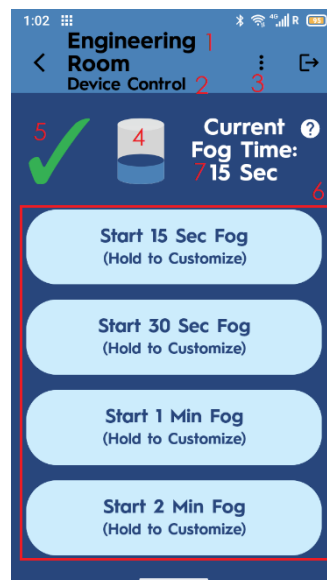


## Adding a Favorite



1. On the scanning screen, press the + *Add Favorite Device* button
2. Select favorite device from drop down list
3. Favorite device will now show at the top of the screen.

## Device Control Page



1. Device Name – The default name is configured as the Breezy Blue's serial number shown on the bottom label of the device. This can be renamed.
2. Page description.



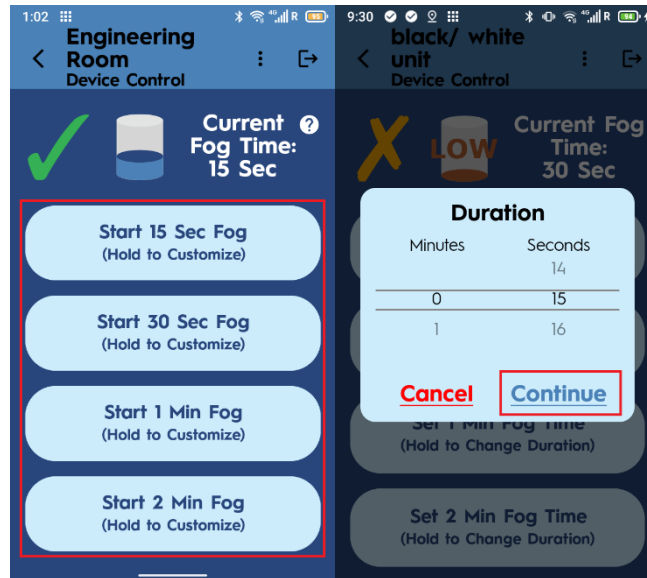


3. Device Menu Button – Opens the device menu with the options to view device and account information, edit or create a fogging schedule, rename the device, or change the Button mode setting.
4. Tank level – Shown in six increments (empty, 20%, 40%, 60%, 80%, and full). A red tank indicator is displayed when nearly empty. See the Breezy Blue User Manual for instructions on refilling the tank with Build With Robots approved solution.
5. Breezy Controller status Icon – This is associated with the status of the device. See the explanation of icons in Table 1.
6. Start Fog Buttons – Used to initiate a fogging event remotely. Each Start Fog Button displays the fogging duration which can be edited.
7. Current Fog Time – Displays fog duration that will be used for push button or scheduled modes



## Fog Time

Fog Time defines the amount of time Breezy Blue dispenses fog in the area.



1. Fog Time is set to 30 seconds at the factory. It is updated each time a fog event is started from one of the 4 buttons to the time defined by the button. Note that when Breezy Blue is in the disabled state, the buttons are named *Set xx Sec Fog Time* instead of *Start xx Sec Fog Time*. Current Fog time is used by the push button and schedule modes and is shown next to the tank level icon.
2. A fogging time of up to 30 minutes can be configured by holding one of the 4 buttons on the device control screen until the controller vibrates then using the number scroll to select minutes and seconds, and pressing "CONTINUE."
3. If the device is disabled, the new fog time is updated immediately in the Current Fog Time. If the device is in any other state, the Current Fog Time will be updated when a fog event has been started using that button.

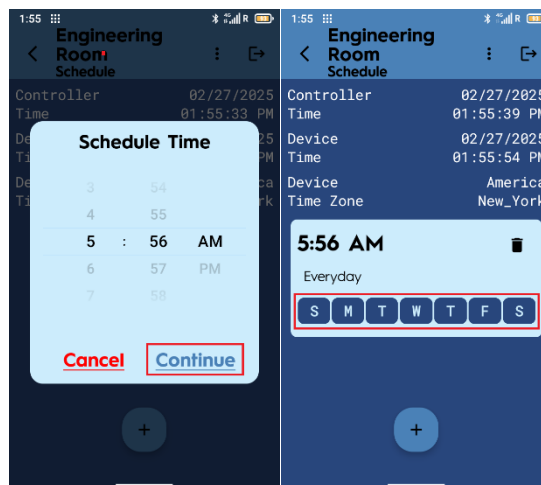
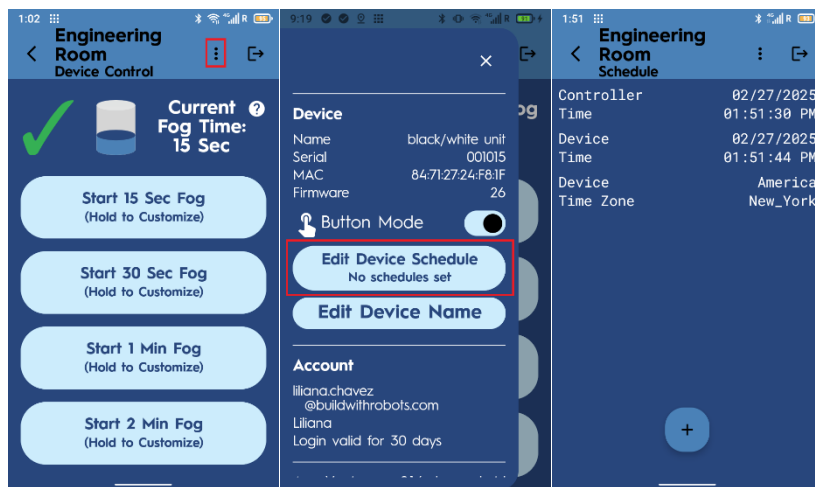


## Button Mode Slider

Enable the Button mode slider to allow Breezy Blue operation without a remote. Disable this slider for remote control and scheduled operation only – recommended for devices left in public areas. The Breezy Blue is factory configured with Button mode enabled – Breezy Blue begins fogging cycle when button is depressed.

## Schedule Button

SCHEDULE Allows the operator to define a schedule for Breezy Blue to automatically fog up to ten repetitive occurrences.

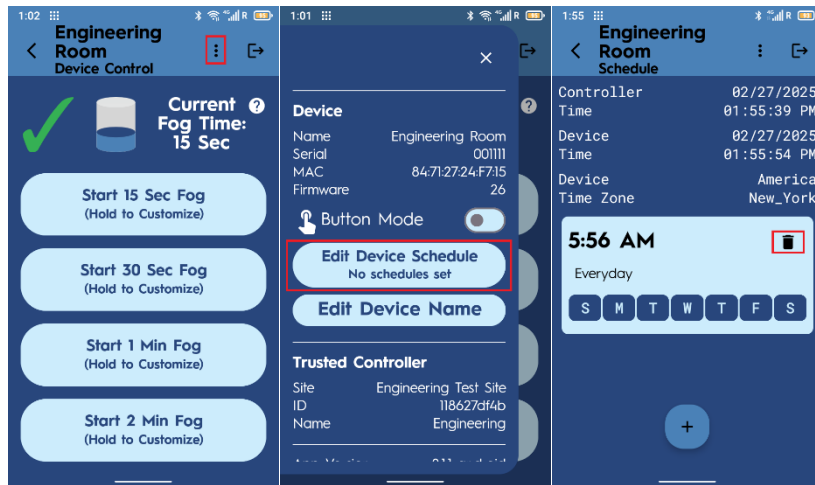


1. Press the *Edit Device Schedule* button on the device after selecting the menu button.
2. Press the “+” button to add schedule.



3. Select the desired time of the day and press *CONTINUE*.
4. Select the days of the week the schedule should fog.
5. Repeat steps 1 to 4 to schedule additional times for the Breezy Blue to fog.

*DELETE SCHEDULE* Allows the operator to clear the existing schedule so the Breezy Blue will no longer fog on a regular schedule.

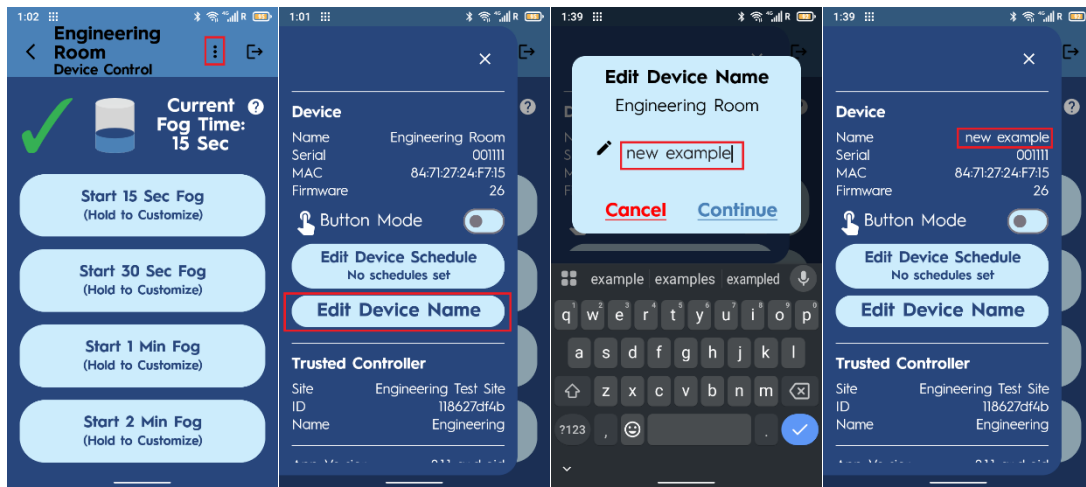


1. On the menu page, press the *Edit Device Schedule* button
2. On the Schedule screen, press the delete icon.
3. The schedule will be deleted.



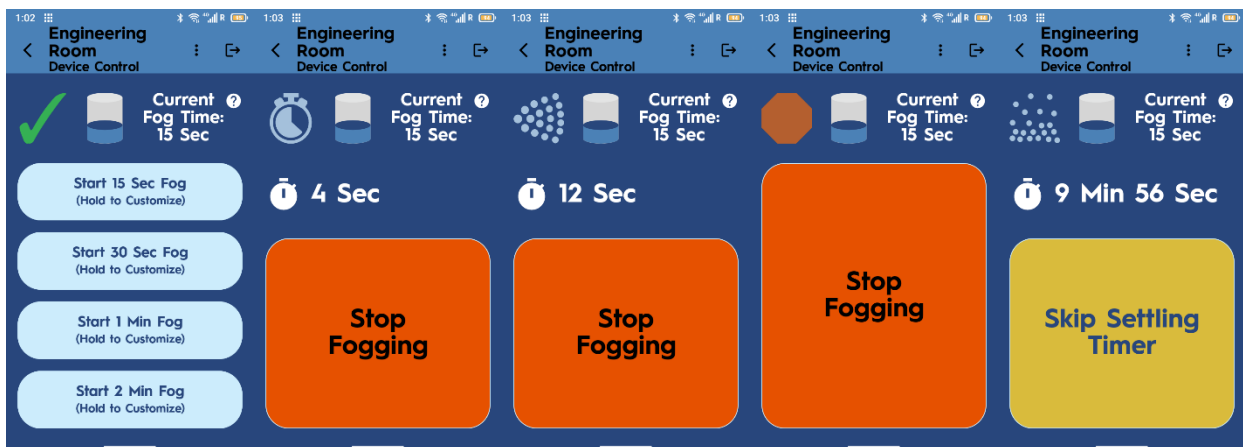
## Edit Device Name Button

Limited to 24 characters. (ex. Class 202, Firehouse 12, Casino 1st floor)



1. Press the menu button and press the *Edit Device Name* button to edit the name.
2. Type a new name in the text field.
3. Press the *Continue* button.
4. The new name will be shown as the device name – the new name will persist even when the device is not connected to the controller.

## Remote Controlled Operation



1. Press the desired fog time button of the four “Start xx Sec Fog” buttons.
2. A countdown of 7 seconds to fogging will initiate. The Breezy Blue waistband light will flash red, and there will be an audible warning to leave the area. Press the *Stop Fogging* button on the controller or the push button on the Breezy Blue to cancel the fogging event.
3. When the countdown ends, fogging will begin. The Breezy Blue waistband will turn solid red. Press the *Stop Fogging* button on the controller or the push button on the Breezy Blue to cancel the fogging event.
4. After fogging, the Breezy Blue device will enter a 10-minute fog settling time indicated by a flashing yellow light on the waistband.
5. When settling has completed, the Breezy Blue waistband will return to a blue color, and the controller will display the four fog time buttons. At this time, the area can be opened for ventilation, and the HVAC system can be turned on to prepare the area for re-entry. For more information on when the room is safe to re-enter, refer to the Breezy BioCare RTU Instructions for Use document.

## Viewing Fogging Logs



The Fogging logs from all the Breezy Blue devices at the site can be viewed at [Cloud.buildwithrobots.com](https://cloud.buildwithrobots.com)

Note: Fogging logs are only available up to the time of the last instance the controller opened the Device control screen for each Breezy Blue Device.



## Device Status Icons

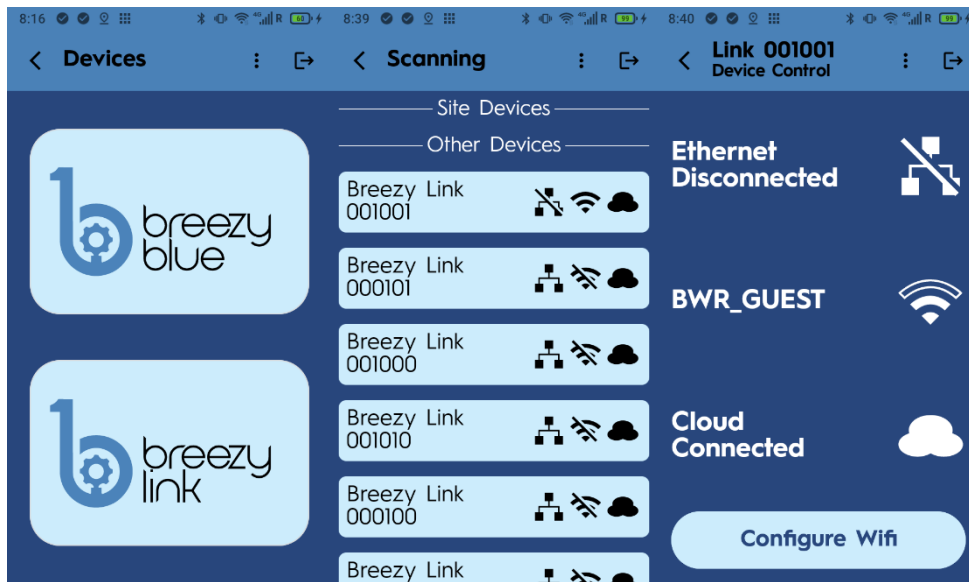
Table 1: Device status icons

Status	LED Ring	Button LEDs	Audio	Status Icon	Breezy Controller Icon
Not currently seen by controller, but previously seen by controller	Any option below	Any Option below			
Idle + Enabled	Blue	Off		Ready to Fog	
Idle + Disabled	Yellow	Yellow		Disabled	
Fogging Countdown	Red, blinking	Red, blinking	[Beep] "Alert, disinfectant fogging will begin soon. Please leave the area or press the disable button."	Countdown	
Fogging	Red	Red		Fogging	
Fog Settling	Yellow, blinking	Off		Settling	
Firmware updating	White, then magenta	Off		Progress bar	
Error	Magenta, blinking	Off		Error	



# Breezy Link

Breezy Link Assistant offers Wi-Fi configuration for Breezy Link devices using a Bluetooth connection from the Smart Controller.

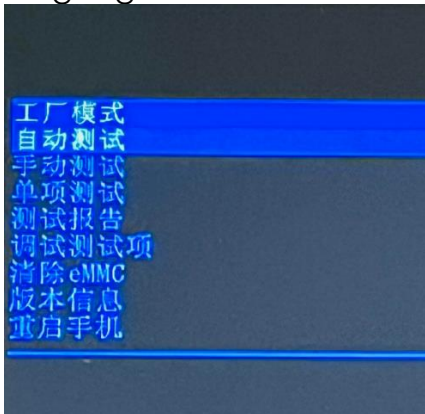
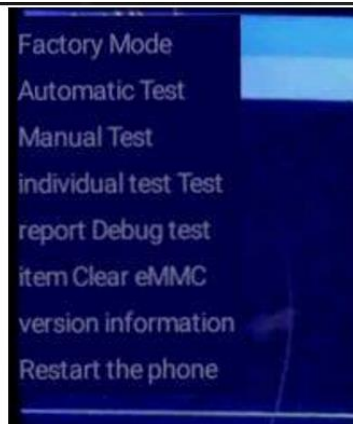


1. After Signing In, select the Breezy Link button on the devices screen.
2. A list of Breezy Link devices that can be configured will be displayed. Selecting one of the Link devices will open a notification requesting to pair to the device.
3. Once paired to the Breezy Link device a control page will be available. This page allows for Wi-Fi configuration of the Breezy Link to a network or disconnecting from the current Wi-Fi network.





# Troubleshooting

PROBLEM	POSSIBLE CAUSES	SOLUTION
Controller displays unexpected Unihertz or Android screen	Controller has entered factory or debug mode	Hold power button for 5 seconds, then press again to power on.
Controller will not properly control a Breezy Blue device	Bluetooth pairing is not valid	Press Repair Connections button from menu on scanning screen
Controller shows “?” next to each Breezy Blue on list	Controller display is not properly refreshing	Press the back button and re-open the scanning screen
Flashlight on controller is accidentally turned on	Controller red side button was pressed and held for > 1 second.	Press and hold controller red side button until light turns off
<p>The controller displays boot screens with unknown language.</p> 	<p>Volume up and power buttons were pressed together during the device's starting. The English version of the earlier screen is attached below.</p> 	<p>Hold the power button for 5 seconds, then press again to power on. Note: Selecting clear eMMC will reset the controller to factory mode. Contact BWR if clear eMMC was accidentally pressed.</p>



# LIMITED WARRANTY (USA/CANADA)

Build With Robots warrants that this product will be free from defects in materials and workmanship for a period of one (1) year from the date of shipment. If any such product proves defective during this warranty period, Build With Robots, at its option, either will repair the defective product without charge for parts and labor, or will provide a replacement in exchange for the defective product. Parts, modules and replacement products used by Build With Robots for warranty work may be new or reconditioned to like new performance. All replaced parts, modules and products become the property of Build With Robots.

In order to obtain service under this warranty, Customer must notify Build With Robots of the defect before the expiration of the warranty period and make suitable arrangements for the performance of service. Customer shall be responsible for packaging and shipping the defective product to the service center designated by Build With Robots, with shipping charges prepaid. Build With Robots shall pay for the return of the product to Customer if the shipment is to a location within the country in which the Build With Robots service center is located. Customer shall be responsible for paying all shipping charges, duties, taxes, and any other charges for products returned to any other locations.

This warranty shall not apply to any defect, failure or damage caused by improper use or improper or inadequate maintenance and care. Build With Robots shall not be obligated to furnish service under this warranty a) to repair damage resulting from attempts by personnel other than Build With Robots representatives to install, repair or service the product; b) to repair damage resulting from improper use or connection to incompatible equipment; c) to repair any damage or malfunction caused by the use of non-Build With Robots supplies; or d) to service a product that has been modified or integrated with other products.

THIS WARRANTY IS GIVEN BY BUILD WITH ROBOTS WITH RESPECT TO THE PRODUCT IN LIEU OF ANY OTHER WARRANTIES, EXPRESS OR IMPLIED. BUILD WITH ROBOTS AND ITS VENDORS DISCLAIM ANY IMPLIED WARRANTIES OF MERCHANTABILITY OR FITNESS FOR A PARTICULAR PURPOSE. BUILD WITH ROBOTS' RESPONSIBILITY TO REPAIR OR REPLACE DEFECTIVE PRODUCTS IS THE SOLE AND EXCLUSIVE REMEDY PROVIDED TO THE CUSTOMER FOR BREACH OF THIS WARRANTY. BUILD WITH ROBOTS AND ITS VENDORS WILL NOT BE LIABLE FOR ANY INDIRECT, SPECIAL, INCIDENTAL, OR CONSEQUENTIAL DAMAGES IRRESPECTIVE OF WHETHER BUILD WITH ROBOTS OR THE VENDOR HAS ADVANCE NOTICE OF THE POSSIBILITY OF SUCH DAMAGES.

